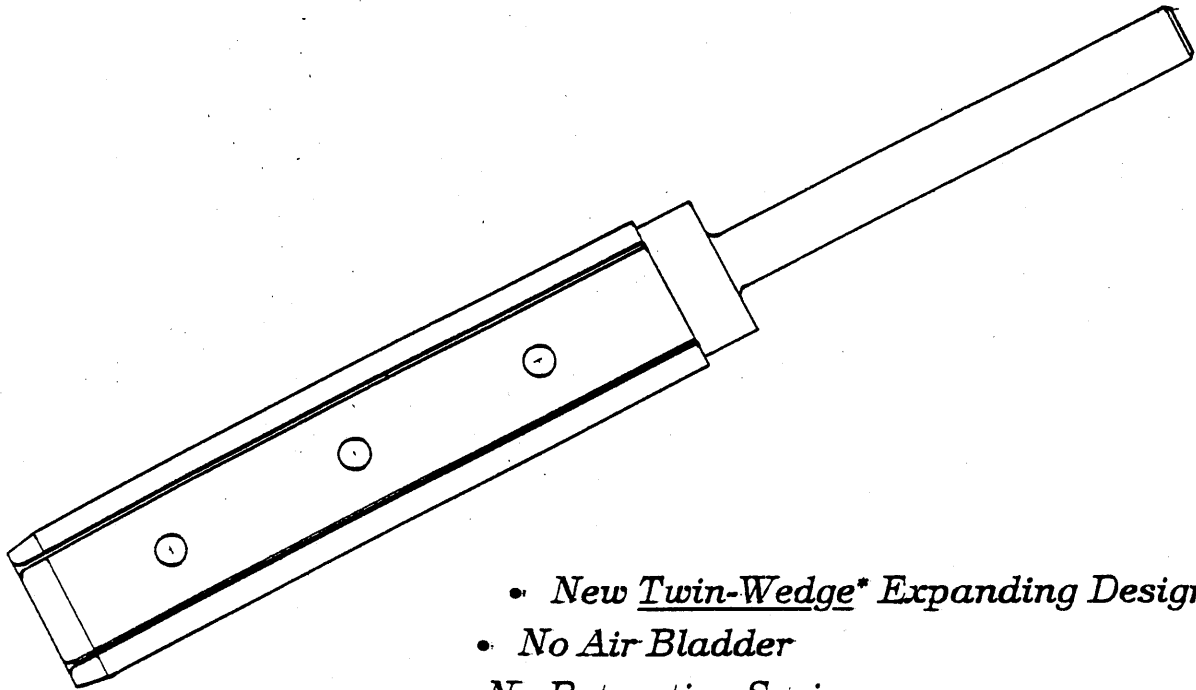
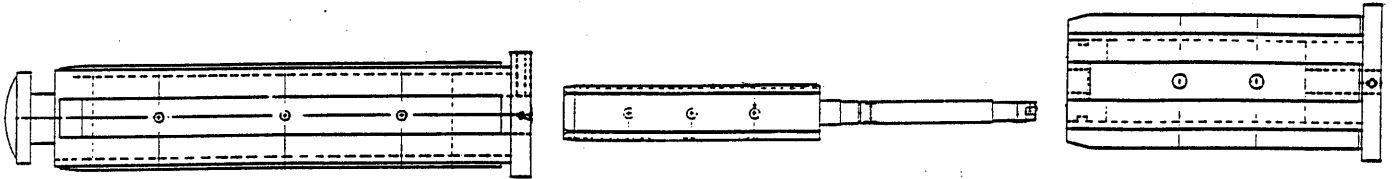


NEW AIR/MECHANICAL EXPANDING SHAFT....

A Design "Break Thru"



- *New Twin-Wedge* Expanding Design*
- *No Air Bladder*
- *No Retraction Springs*
- *Designed to Operate Manually or with Air Rotary Union*
- *Fast Roll Changes*
- *Minimum Spare Parts and Cost*
- *"Slat" or "Leaf" Design for Core or Coreless Operation*
- *Cantilevered for use with all Types of Materials*
- **DISCOVER THE DIFFERENCE**



*PATENT # 4,911,376

R & S MACHINERY & DESIGN, INC.

Plant Location

2115 Dunavant Street
Charlotte, NC 28203

Mailing Address

PO Box 802
Belmont, NC 28012

Phone: 704-344-9954 - Fax: 704-344-0545

E-mail: rsmach@bellsouth.net

Website: www.rsmachinery.com